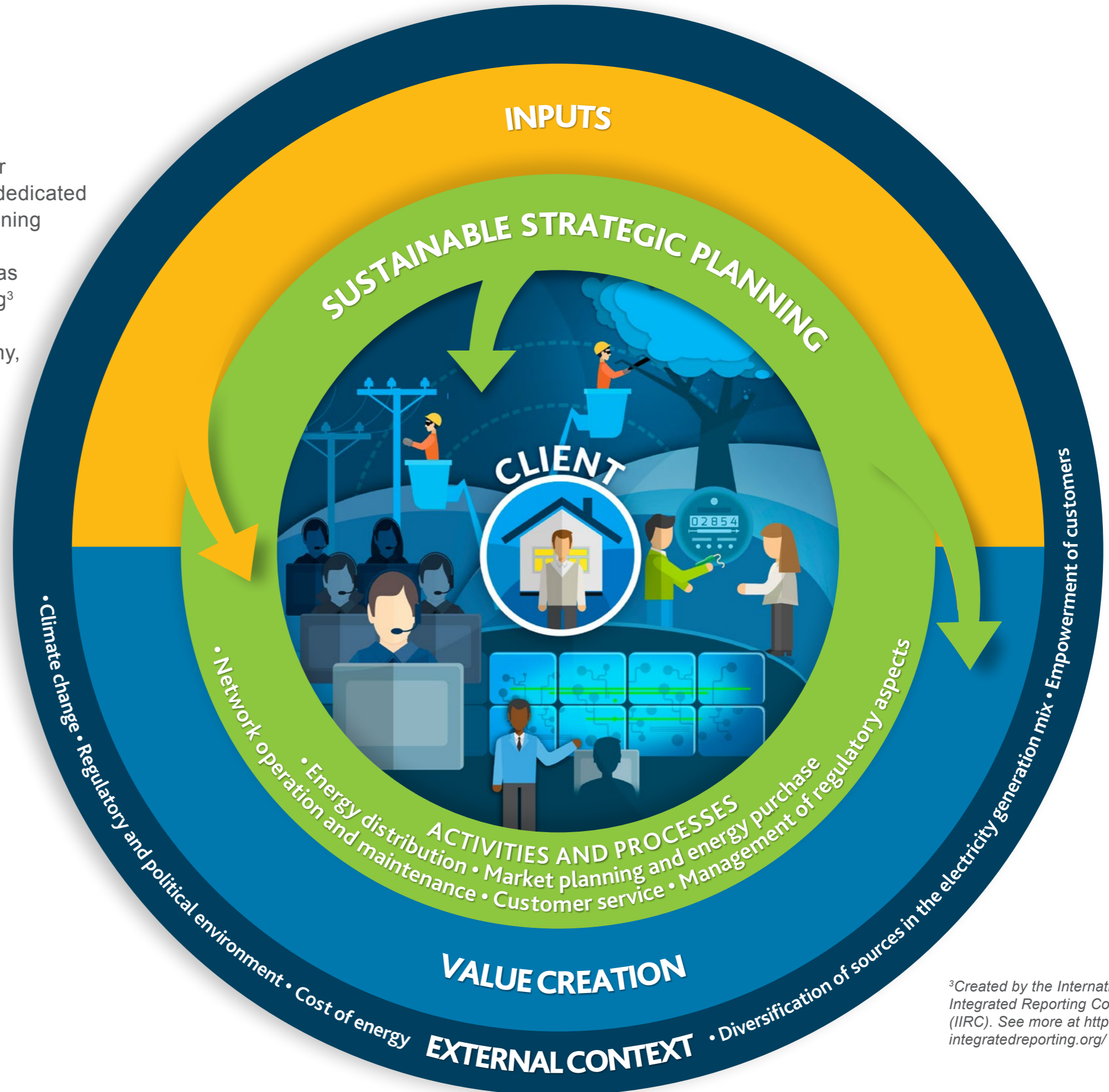


VALUE CREATION MODEL

In order to inform our stakeholders about our management and operations, we are always dedicated to evolving our accountability models, maintaining transparency as one of our guidelines.

One of the main advances in this process was applying the principles of Integrated Reporting³ and the collaborative design, involving employees from different areas of the company, of AES Eletropaulo's value creation model. Our objective is to demonstrate to all stakeholders how we transform inputs and create value for the various types of capital (financial, human, intellectual, social & relationship, manufactured, and natural).



Click the icons to see the inputs and value creation of AES Eletropaulo for each capital

³Created by the International Integrated Reporting Council (IIRC). See more at <http://integratedreporting.org/>